

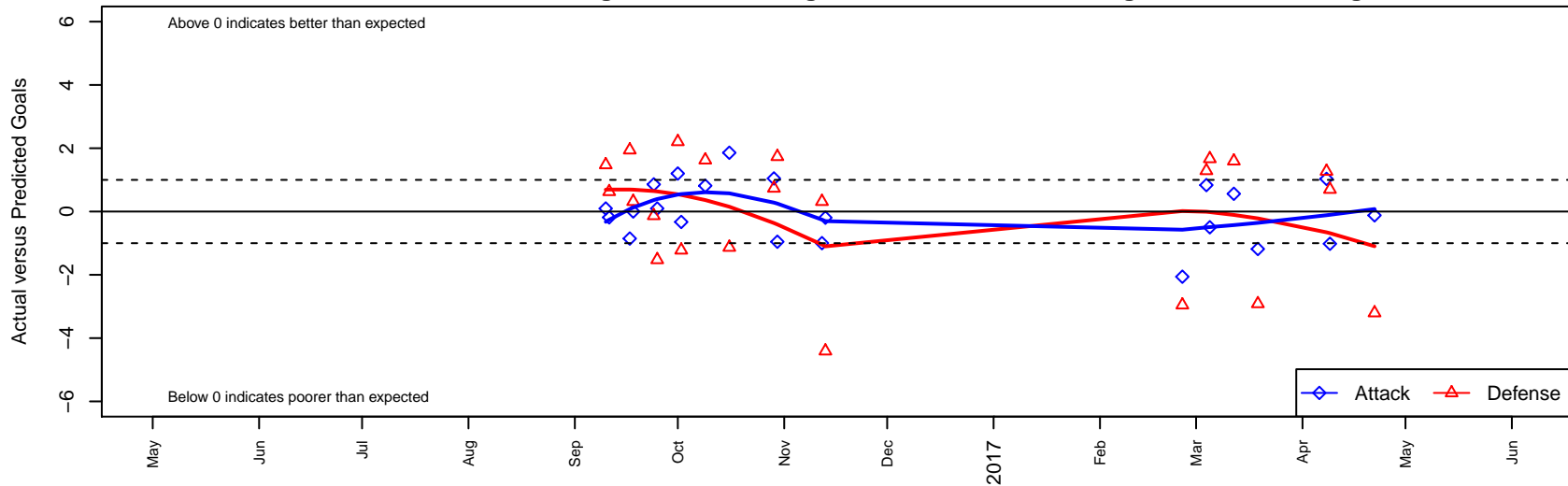
BSC Portland Black B03

Bridlemile SC Portland
 Portland, OR
 B03 total strength=1045
 attack=3.16 defense=1.73
 fall league = PTT B03 Premier White
 spr league = Spr OYS B03 Div 1 Green
 notes= Legends

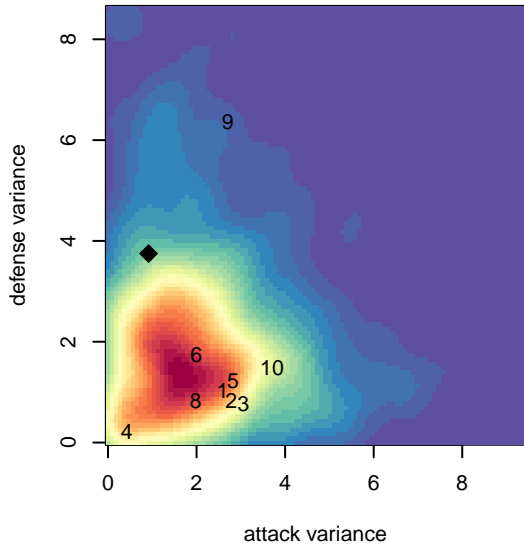
alt names used:
 BSC 03B Black
 BSC 03B Black

Venues played:
 2016 PTT B03 Premier White
 2016 Spr OYS B03 Division 1 Green

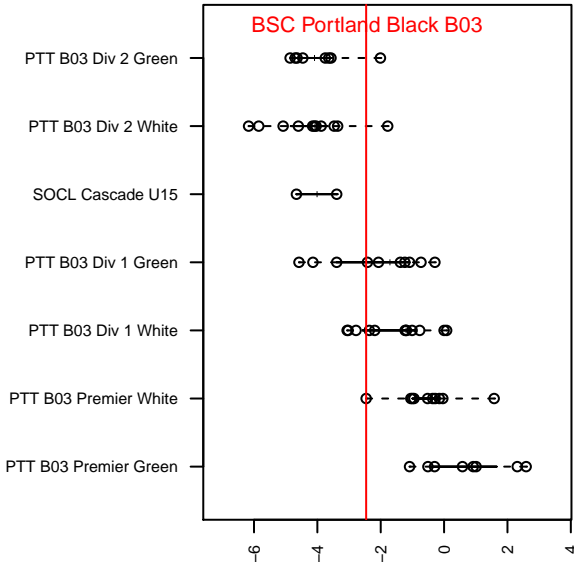
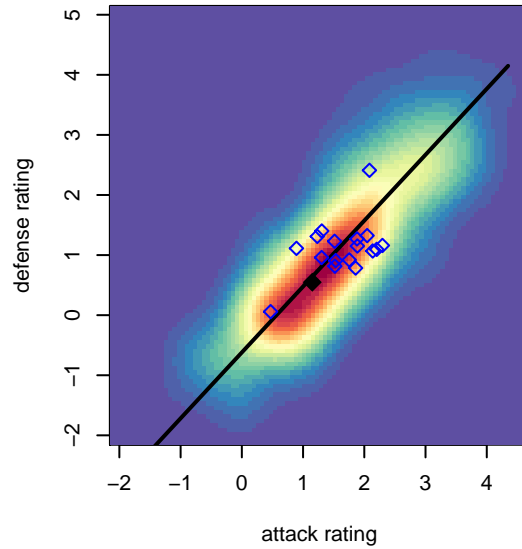
BSC Portland Black B03
 Dots are actual minus expected GF (blue circles) and GA (red triangles).
 Blue line is smoothed change in attack strength. Red is smoothed change in defense strength.



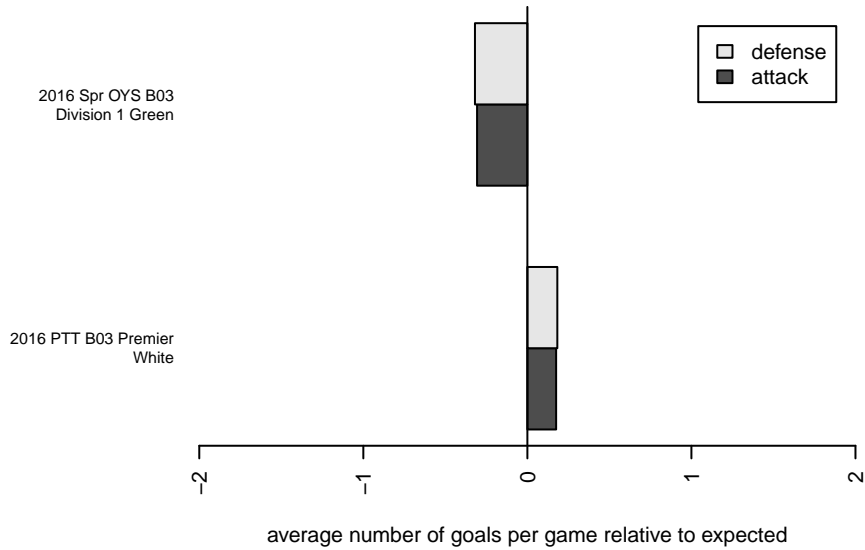
**attack and defense variance (black dot)
relative to other teams
and top 10 in region**



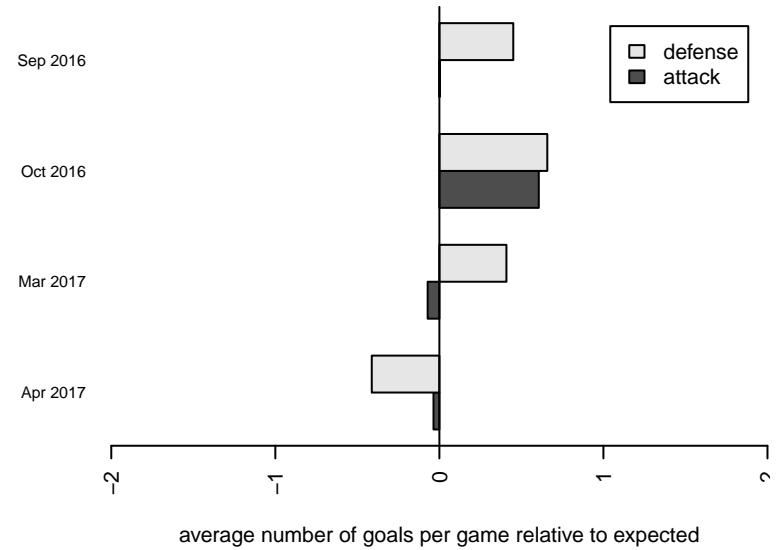
**attack and defense rating
relative to others at age
and all opponents in last 13 months**



Performance relative to 13 month average



Performance relative to 13 month average



date	home		away		venue	pred.home	pred.away
2017-04-22	BSC Portland Black B03	1	Salem Chelsea B03	8	2016 Spr OYS B03 Division 1 Green	1.12	4.80
2017-04-09	HSC Velez B03	1	BSC Portland Black B03	0	2016 Spr OYS B03 Division 1 Green	1.70	1.02
2017-04-08	BSC Portland Black B03	4	CSC Storm Navy B03	0	2016 Spr OYS B03 Division 1 Green	2.97	1.27
2017-03-19	BSC Portland Black B03	0	Pacific FC United B03	5	2016 Spr OYS B03 Division 1 Green	1.18	2.08
2017-03-12	PCU Black 1 B03	1	BSC Portland Black B03	2	2016 Spr OYS B03 Division 1 Green	2.59	1.44
2017-03-05	Westside Timbers Samba B03	1	BSC Portland Black B03	1	2016 Spr OYS B03 Division 1 Green	2.67	1.50
2017-03-04	BSC Portland Black B03	2	FC West B03	0	2016 Spr OYS B03 Division 1 Green	1.16	1.29
2017-02-25	THUSC Beryllium Black B03	6	BSC Portland Black B03	0	2016 Spr OYS B03 Division 1 Green	3.05	2.06
2016-11-13	ETFC Ajax Black B03	8	BSC Portland Black B03	1	2016 PTT B03 Premier White	3.59	1.19
2016-11-12	RVSC Timbers Red B03	2	BSC Portland Black B03	0	2016 PTT B03 Premier White	2.32	1.00
2016-10-30	NEU White B03	2	BSC Portland Black B03	0	2016 PTT B03 Premier White	3.73	0.95
2016-10-29	BSC Portland Black B03	2	NEU White B03	3	2016 PTT B03 Premier White	0.95	3.73
2016-10-16	Eastside Timbers Black B03	5	BSC Portland Black B03	3	2016 PTT B03 Premier White	3.87	1.14
2016-10-09	BSC Portland Black B03	2	4-H FC Joga B03	3	2016 PTT B03 Premier White	1.18	4.63
2016-10-02	BSC Portland Black B03	0	Capital FC Timbers Red B03	6	2016 PTT B03 Premier White	0.33	4.78
2016-10-01	Academia de Futebol ADF B03	0	BSC Portland Black B03	2	2016 PTT B03 Premier White	2.21	0.80
2016-09-25	FC Portland White B03	5	BSC Portland Black B03	1	2016 PTT B03 Premier White	3.48	0.90
2016-09-24	BSC Portland Black B03	2	Eastside Timbers Black B03	4	2016 PTT B03 Premier White	1.14	3.87
2016-09-18	BSC Portland Black B03	1	RVSC Timbers Red B03	2	2016 PTT B03 Premier White	1.00	2.32
2016-09-17	BSC Portland Black B03	0	LASC IFC Coras B03	4	2016 PTT B03 Premier White	0.85	5.94
2016-09-11	4-H FC Joga B03	4	BSC Portland Black B03	1	2016 PTT B03 Premier White	4.63	1.18
2016-09-10	BSC Portland Black B03	1	FC Portland White B03	2	2016 PTT B03 Premier White	0.90	3.48